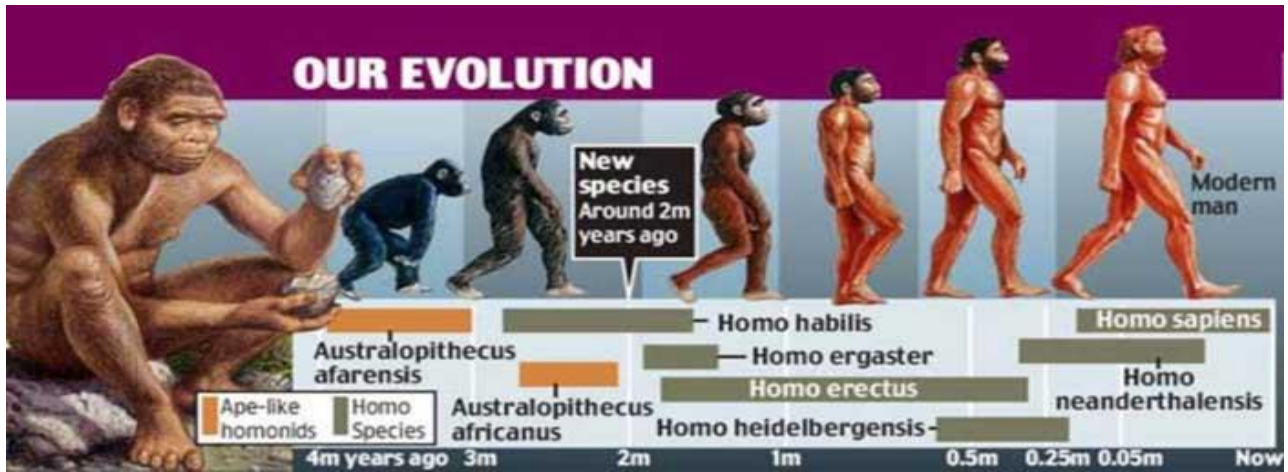
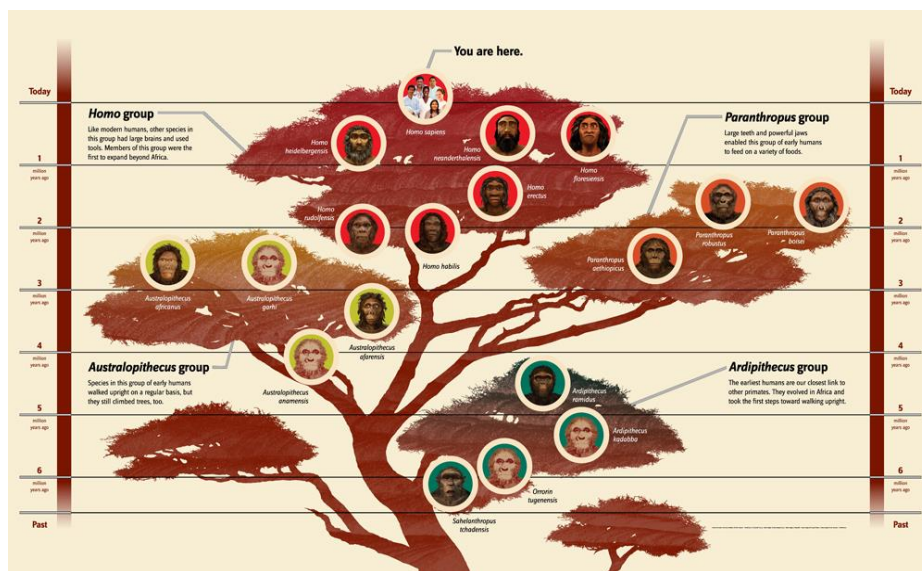


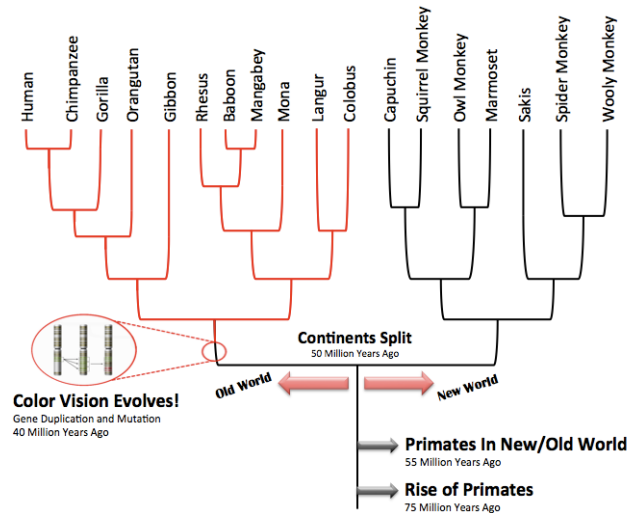
“Planet of the Apes”
Genesis 1:27

Old Evolutionary Tree =



New Evolutionary Tree =





Scientific fallacy –

Lucy – <https://www.youtube.com/watch?v=SyZ0Tgpp1Cw>; multiple bone fragments scattered over an entire area. Proven to be an extinct monkey. Bones were actually ground down to fit (physically and scientifically).

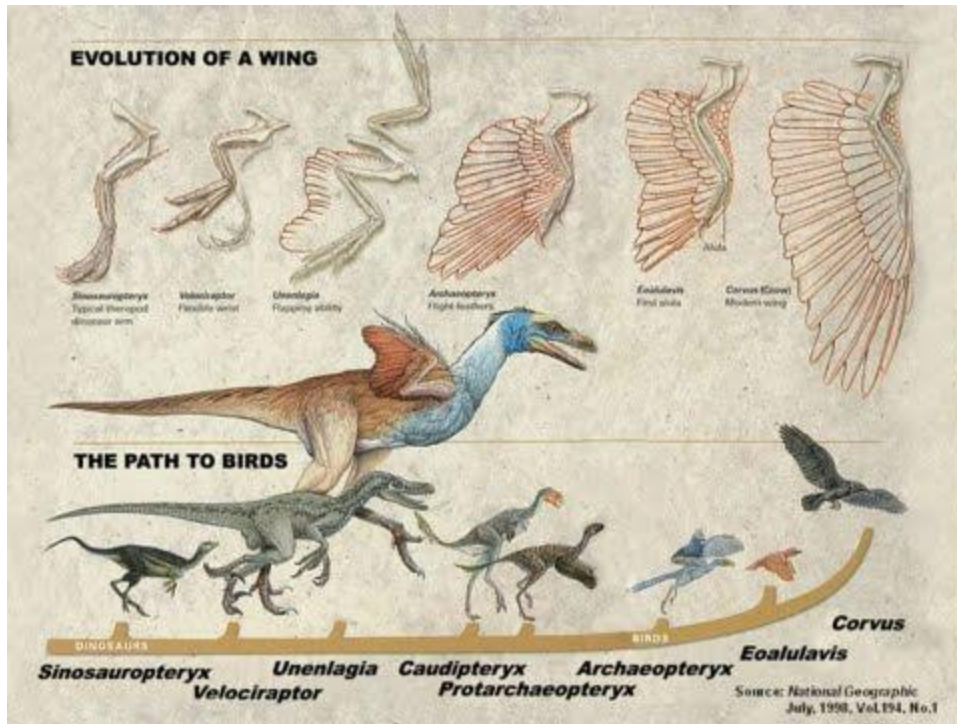
Pittdown Man – outright fraud; orangutan fragments

Nebraska Man – (from one molar) – turned out to be an extinct pig

Neanderthal Man – a man; not an ape-man; “of the same kind;” DNA samples have been found in living humans in Borneo, Indonesia, and the Philippines.

To give credit – these were debunked by “evolutionary scientists.” However, this illuminates that the evolutionary community has yet to establish any _____ evidence for the evolutionary transition of ape to man.

There are _____ transitional forms where one kind becomes another kind. Evolutionists still claim that they have several transitional fossils, i.e., a bird turning into an animal or vice versa, but they are simply a different species of the same kind.



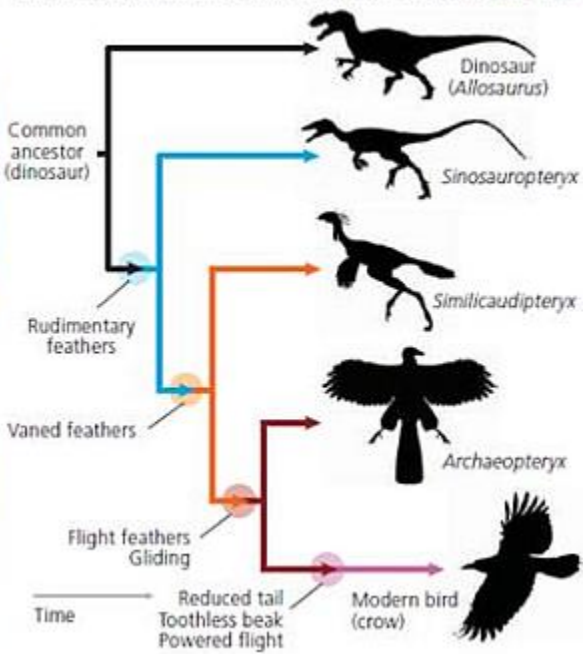
(a) *Sinosauropteryx*



(b) *Similicaudipteryx*



(c) *Sinosauropteryx* and *Similicaudipteryx* as transitional forms



DNA, RNA, and the field of genetics, especially genetic _____ and mutation has forced the evolutionist to come up with a different "theory" of origin. Common traits do not give evidence of genetic relationship. For example, possums have opposable thumbs but no one would suggest that we evolved from possums. This issue is not how many things do we have in _____, but what makes us _____. The differences in biological make-up are so distinct and many that you cannot make the connection between the ape "kind" and human "kind."

Genetic Entropy = Genetic entropy is the systematic breakdown of the internal biological _____ systems that make life alive. Genetic entropy is most easily understood on a personal level. In our bodies there are roughly 3 new _____ (word-processing errors), every cell division. Our cells become more mutant, and more divergent from each other every day. By the time we are old, each of our cells has accumulated tens of thousands of mutations. Mutation accumulation is the primary reason we grow old and _____.

There is another level of genetic entropy that affects us as a population. Because mutations arise in all of our cells, including our reproductive cells, we pass many of our new mutations to our children. So, mutations continuously _____ in the population – with each generation being more mutant than the last. So not only do we undergo genetic _____ personally, we also are undergoing genetic degeneration as a population. This is essentially evolution _____. We are not evolving, we are _____.

Just think about the great civilizations of the Incas, Aztec, Egyptians, etc...knowledge _____ and lost.

Genesis tells us that man used to live to almost _____ years. The lifespan of a man in A.D. 1200 was 35. In the 1800's it was not much more – between 35 and 40. Today, it is around _____ primarily due to hygiene and medical advancements.

Biblical ex. of same kind but variation – Anakim, Nephelim, etc..._____ and _____ yet same kind.

Genesis 11 gives us the beginning of human _____ distinction due to dominant gene variation and retention viewed not only in skin color but in bone structure and in disease potential.

Creationist/biblical view = “Then God said, ‘Let us make man...’”

Image and Likeness:

The Greek Septuagint of Genesis 1:26 says, “And said God, ‘Let us make man in our *ἰκονα* (Heb. – *tselem*) and according to our *homoiosin* (Heb. – *demuth*).”

What is the image of God? Humanity was designed to be a physical, temporal, verification of the non-physical, eternal _____ of the person of God.

As the truth of an _____ lies in the person or thing that it _____, so the truth of a man lies in what he represents.

Man, therefore, is not understood _____ but _____.

Biblical anthropology (the biblical study of man) does not begin with _____ (the first created person), but with an understanding of _____, the perfect God/man, the second Adam.

The words *image* and *likeness* can be understood as:

1. Synonyms

2. Diminutives
3. Egyptian Royalty comparatives, cp. Daniel 3 and Revelation 13-16; cp also with Mt. 22:17-21 (image of Caesar on the coin)
4. As separate and distinct:
 - a. Image = a _____ state; something that does not change
 - b. Likeness = a _____/dynamic state; something that is _____.

Point: All humans are made in the _____ of God at creation; all humans have been given the potential to be his _____ through his grace.

The distinction will be important as we look at the Fall. What was lost when Adam and Eve sinned? Image. Likeness. Both. Neither.

Key questions:

How does image and likeness connect to:

1. Self-worth – Acts 17:29
2. Murder/Homicide – Genesis 9:6
3. Work – Genesis 2:15 with John 5:17
4. Idolatry – Leviticus 26:1

5. Lying – Colossians 3:10

6. Jesus – Colossians 1:15

7. Poverty/Homelessness – Deut. 15:4-11